



414 East Joppa Rd.
 Towson, MD 21286
 (410) 321-7222 Phone
 (410) 321-0963 Fax
 sales@easterncontrols.com

After-Hours Emergency Repair Services Hotline:
 (866) 566-9820
 *For service related emergencies only

Valves & Accessories: Serving Maryland, Washington DC , & Northern Virginia

Masoneilan

Camflex®, Varipak®, Globe, Ball & Butterfly Control Valves; SVI® II AP Digital Valve Positioner and SVI® ESD Smart Valve device with partial stroking functionality; Low Noise and Anti-Cavitation Designs; Pressure Regulators; Level & Pressure Controllers, Level and Pressure Controllers; Complete Valve Diagnostics.



High Quality Control Valves for Low Flows, Cryogenic Three-way, and Sanitary Control Applications.



Pressure Reducing & Back-Pressure Regulators; Pilot Operated Regulators; Liquid, Gas, and Steam Services.



Severe Service, Cryogenic, Fugitive Emission, Bellows Seal, and General Purpose Ball Valves. Instrument and Process Valves for DP, GP, and Level Close-Couple Impulse Line Installations. Hastelloy C, Alloy 20, Titanium, Inconel, Monel, 316 SS, 304L SS, and other Exotic Materials are Standard.



Industrial Ball Valves, 2-way through 5 way multiport valves, Adjust-O-Seal design, Flush Tank Valves, Cryogenic, Transmitter Isolation valves, Instrument Root Valves, Direct connection actuation.



Electraulic™ Valve Actuators and Drives. Micro-Processor Based; Modulating or On/Off Applications.



¼ Turn Pneumatic & Electric Actuators



Electro-Pneumatic Transducers, P/I Transducers, Pneumatic and I/P Valve Positioners, Air Filter Regulators, Cylinders, and Volume Boosters.



Valve Position Monitoring & Indication Products



Go Proximity Limit Switches, Valve Position Indication Packages.



Complete line of General and Special Purpose 2, 3, & 4-way Solenoid Valves and Valve Monitors as well as Pressure and Temperature Switches and accessories.



414 East Joppa Rd.
 Towson, MD 21286
 (410) 321-7222 Phone
 (410) 321-0963 Fax
 sales@easterncontrols.com

After-Hours Emergency Repair Services Hotline:
 (866) 566-9820
**For service related emergencies only*

Instrumentation: Serving Maryland, Washington DC , & Northern Virginia



Vortex, Magnetic, and Coriolis Flowmeters; D/P, Multivariable D/P, Pressure, Temperature, and Level Transmitters; Single Loop Controllers; Electro-Chemical, pH, Conductivity, Resistivity, Analytical Recorders.



Gas Analyzers for Safety and Process Monitoring Including Combustibles Toxics, Oxygen, and Refrigerants in Multiplex and Stand Alone Designs.



Thermal Mass Gas Flowmeters: Insertion, In-line and Multi-point; Integral or remote electronics, Thermal Flow, Level, and Temperature Switches, CEMS monitors. NIST traceable calibration facility.

** Only available in MD & DC*



State-of-the-art High Performance and accuracy Ultrasonic Flowmeters for both clamp-on portable and in-line fixed installations. Precise pressure measurement sensors, and indicators. Moisture and dew point instrumentation. Process and Portable Calibrators with National Standard references.



Verabar® and Accelabar® Velocity Averaging Flow Meters; Mass Gas Flow systems, Main Steam Line Flow Meters, and Emission Monitoring systems.



Tracepak® - The Electric and Steam Traced Tubing Bundle.
 VIPAK® Instrument Enclosures. SaddlePak® Instrument Installation Supports.



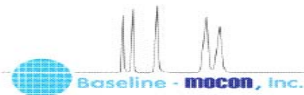
Process Wiring Solutions: Cordsets, Junction Boxes, Conduit Adapters, Control Cable, Remote I/O. Device Net, Asi, Foundation Fieldbus, Profibus-PA, HART, and Ethernet Interface.



SIL 3 scaleable Safety Instrumented Systems (SIS) certified by TÜV for ISA 8401, NFPA72 & 85, and IEC 61511. Universal integration with all major DCS systems. Process industry applications include EDS, BMS, F&G, and rotating equipment protection.



2-, 3-, 5-valve manifolds for process instrumentation, B31.1 Power plant valves and manifolds, Direct-Mount Manifold Systems, Zeus Power generation systems, Measurement Accuracy Systems, Interceptor Gas Samplers, NOVA Liquid & Gas Samplers, Sample Cylinders & Probes, Hot-Shot Heated enclosures.



Gas chromatography and analysis for automated process stream, industrial hygiene, hazard and emissions monitoring. Continuous analyzers, gas chromatographs and portable personal monitors.



Steam Traps: Mechanical, Thermodynamic; Thermostatic Designs, Trap diagnostics, Equipment & Services; Condensate Pumps, Separators, Compressed Gas/Air drains, Regulators (Self Op & Motorized), Check Valves, Air Vents (Steam & Water).



Rotameters - Variable area flowmeters for use in countless industrial applications: power generation, petrochemical, oil and gas, pulp and paper, water and wastewater, mining, agricultural, food and many others.



Thermocouples, RTDs, Thermowells, Temperature transmitters, General purpose and specialty Sensors.