



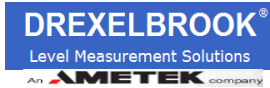
25 Pompton Ave., Suite 205
 Verona, NJ 07044
 (973) 571-1770 Phone
 (973) 239-4540 Fax
 sales@easterncontrols.com

*After-Hours Emergency Repair Services Hotline:
 (866) 566-9820*

**For service related emergencies only*

Serving New Jersey, Metropolitan New York, & Long Island

Masoneilan



TBV



Camflex®, Varipak®, Globe, Ball & Butterfly Control Valves; SVI® II AP Digital Valve Positioner and SVI® II ESD Smart Valve device with partial stroking functionality; Low Noise and Anti-Cavitation Designs; Pressure Regulators; Level and Pressure Controllers; Full Valve Diagnostics.

Vortex, Magnetic, and Coriolis Flowmeters; D/P, Multivariable D/PPressure, Temperature, and Level Transmitters; Single Loop Controllers; Electro-Chemical, pH, Conductivity, Resistivity. Analytical Recorders.

Research Control Valves for Low Flows, 3-way, Cryogenic, and Sanitary Control Applications. Pneumatic and Electric Actuator Bronze Body material also available.

Tracepak®—The Electric and Steam Traced Tubing Bundle; VIPAK® Instrument Enclosures; and SaddlePak® Instrument Installation Supports.

State-of-the-art High Performance and accuracy Ultrasonic Flowmeters for both clamp-on portable and in-line fixed installations. Precise pressure measurement sensors, and indicators. Moisture and dew point instrumentation. Process and Portable Calibrators with National Standard references.

Solutions for Level: RF Admittance Ultrasonic, Radar, TDR Magnetostrictive, Conductivity, Floatation, Hydrostatic Pressure, Vibration, Tuning Fork, Wireless Interface Solutions, Receivers.

Severe Service, Cryogenic, Fugitive Emission, Bellows Seal, and General Purpose Ball Valves. Instrument and Process Valves for DP, GP, and Level Close-Couple Impulse Line Installations. Hastelloy C, Alloy 20, Titanium, Inconel, Monel, 316 SS, 304L SS, and other Exotic Materials are standard.

Process Wiring Solutions: Cordsets, Junction Boxes, Conduit Adapters, Control Cable, Remote I/O. Device Net, Asi, Foundation Fieldbus, Profibus-PA, HART, and Ethernet Interface.

SIL 3 scaleable Safety Instrumented Systems (SIS) certified by TUV for ISA 8401, NFPA72 & 85, and IEC 61511. Universal integration with all major DCS systems. Process industry applications include EDS, BMS, F&G, and recoating equipment protection.

Two-Way and Three-Way Ball Valves for the Industrial, Pharmaceutical, Biotech, Food & Beverage Industries. Compact Actuators. Tank Bottom Valves. Best in class - Manual and Actuated.

2-, 3-, 5-Valve Manifolds for Process Instrumentation, B31.1 Power Plant Valves and Manifolds, Direct-Mount Manifold Systems, Zeus Power generation systems, Measurement Accuracy Systems, Interceptor Gas Samplers, NOVA Liquid & Gas Samplers, Sample Cylinders & Probes, Hot-Shot Heated enclosures, ThermoSync Thermowells.

Electraulic™ Valve Actuators and Drives; Modulating or On/Off; Configurations for Valves and Dampers as well as Turbine Control applications. Micro-Processor Based; Modulating or On/Off.

Position, Control, and Network Valve Monitoring Systems: Asi, Device Net Foundation Fieldbus. Proximity Positioners and Sensors.

Rotameters - Variable area flowmeters for use in countless industrial applications: power generation, petrochemical, oil and gas, pulp and paper, water and wastewater, mining, agricultural, food and many others.

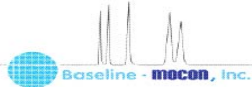


Flow-Lin

TLV

TOPWORX
Advancing Valve Performance

VERIS



SSI SMART SENSORS INC.

BTG
RAISING YOUR PRODUCTIVITY



integra
Companies, Inc.



ASCO

Electro-Pneumatic and P/I Transducers. Pneumatic and I/P Valve Positioners. Precise Regulators. Air Filter Regulators, Pneumatic Cylinders, Air Relays, and Volume Boosters.

Primary Flow Elements: Orifice Plates, Orifice Flange Unions, Flow Nozzles, Venturi Tubes, Meter Runs, and Flow Engineering Services.

Steam Traps: Mechanical, Thermodynamic; Thermostatic Designs, Trap Diagnostic Equipment & Services; Condensate Pumps, Separators, Compressed Gas/Air drains, Regulators (Self Op & Motorized), Check Valves, Air Vents (Steam & Water).

Proximity Limit Switches; Valve Position Indication Packages.

Verabar® and Accelabar® Velocity Averaging Flow Meters; Mass Compensated Flow Systems, Main Steam Line Flow Meters, and Emission Monitoring systems.

Gas Chromatography and Analysis for Automated Process Stream, industrial hygiene, hazard and emissions monitoring. Continuous analyzers, gas chromatographs and portable personal monitors.

Specialty ball, swing check, choke, and rotary control valves for the power, mining, aerospace, and refining industries.

Thermocouples, RTD's, Thermowells, Temperature Transmitters, General Purpose and Specialty Sensors.

Consistency Transmitters, Brightness Transmitters, Charge and Retention Analyzers, Process Sensors, Coating, Creping, and other products for the Pulp and Paper Industry.

High Purity Platinum Cured Silicone Gaskets. Orifice Flanges, O-Rings, and Thermocouple Gaskets. Tef-Steel, TFE and Silicone Screen Gaskets, Torque Clamps and Sanitary Hoses.

Sanitary FDA Approved Hose; Tubing and Fittings for Ultra Pure and Difficult to Handle Liquids and Gases for the Pharmaceutical Industries.

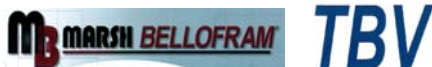
Pharmaceutical and Biotech Process Instrumentation: Pressure, Temperature, and Level. Sanitary Transmitters with HART Output. New CPM Zero Dead-Leg Fittings.

Complete line of General and Special Purpose 2, 3, & 4-way Solenoid Valves and Valve Monitors as well as Pressure and Temperature Switches and accessories.

Valve Repair and Instrument Calibration Services



Sample Before and After Photographs



WESTLOCK
CONTROLS CORPORATION

ECI provides only factory-trained and certified repair technicians

Masoneilan Authorized Repair Center

Complete Online and Offline Valve Diagnostic and Predictive Maintenance Services

Foxboro Authorized Service Provider

MSA Factory Authorized Calibration and Field Services Provider

1/4-Turn and Linear Valve Assembly, Sales, and Service

ECI provides our customers with complete On/Off and Control Valve packages.

Butterfly; Ball; Plug; Gate; General or Severe Service Valves

Pneumatic or Electric Actuators;

ASCO; TBV; Marsh Bellofram;

Remote Control; Jordan; Westlock; and Topworx.