



3866 Providence Rd.
 Edgemont, PA 19028
 (610) 325-4600 Phone
 (610) 325-2476 Fax
 sales@easterncontrols.com

After-Hours Emergency Repair Services Hotline:
 (866) 566-9820
 *For service related emergencies only

Serving Pennsylvania, Delaware, and New Jersey

Masoneilan



Camflex®, Varipak®, Globe, Ball & Butterfly Control Valves; SVI® II AP Digital Valve Positioner and SVI® II ESD Smart Valve device with partial stroking functionality; Low Noise and Anti-Cavitation Designs; Pressure Regulators, Level & Pressure Controllers; Complete Valve Diagnostics. Level and Pressure Controllers; Complete Valve Diagnostics.

Vortex, Magnetic, and Coriolis Flowmeters; D/P, Multivariable D/P, Pressure, Temperature, and Level Transmitters; Single Loop Controllers; Electro-Chemical, pH, Conductivity, Resistivity, Analytical Recorders.

Gas Analyzers for Safety and Process Monitoring Including Combustibles, Toxics, Oxygen, and Refrigerants in Multiplex and Stand Alone Designs.

Tracepak® - The Electric and Steam Traced Tubing Bundle.
 VIPAK® Instrument Enclosures. SaddlePak® Instrument Installation Supports.

Thermal Mass Gas Flowmeters: Insertion, In-line and Multi-point; Integral or remote electronics, Thermal Flow, Level, and Temperature Switches, CEMS monitors. Low pressure drop flow conditioners for steam, gas and liquid service.

State-of-the-art High Performance and accuracy Ultrasonic Flowmeters for both clamp-on portable and in-line fixed installations. Precise pressure measurement sensors, and indicators. Moisture and dew point instrumentation. Process and Portable Calibrators with National Standard references.

SIL 3 scaleable Safety Instrumented Systems (SIS) certified by TÜV for ISA 401, NFPA72 & 85, and IEC 61511. Universal integration with all major DCS systems. Process industry applications include EDS, BMS, F&G, and rotating equipment protection. HIMax that integrate with all major DCS and plant control systems; Burner Management Systems, Fire and Gas systems.

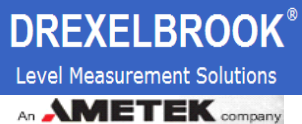
Verabar® and Accelabar® Velocity Averaging Flow Meters, Mass Compensated Flow Systems, Main Steam Line Flow Meters, and Emission Monitoring systems.

2-, 3-, 5-valve Manifolds for process instrumentation, B31.1 Power plant Valves and Manifolds, Direct-Mount Manifold Systems, Zeus Power generation systems, Measurement Accuracy Systems, Interceptor Gas Samplers, NOVA Liquid & Gas Samplers, Sample Cylinders & Probes, Hot-Shot Heated enclosures.

Process Wiring Solutions: Cordsets, Junction Boxes, Conduit Adapters, Control Cable, Remote I/O. Device Net, Asi, Foundation Fieldbus, Profibus-PA, HART, and Ethernet Interface. HART, and Ethernet Interface.

Electraulic™ Valve Actuators and Drives; Micro-Processor Based; Modulating or On/Off; configurations for Valves and Dampers & Turbine Control applications.

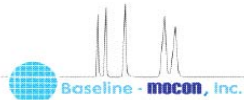
Industrial Ball Valves, 2-way through 5 way multiport valves, Adjust-O-Seal design, Flush Tank Valves, Cryogenic, Transmitter Isolation valves, Instrument Root Valves, Direct connection actuation.



Solutions for Level: RF Admittance Ultrasonic, Radar, TDR Magnetostrictive, Conductivity, Floatation, Hydrostatic Pressure, Vibration, Tuning Fork, Wireless Interface Solutions, Receivers.



Specialty ball, swing check, choke, and rotary control valves for the power, mining, aerospace, and refining industries.



Gas Chromatography and analysis for automated process stream, industrial hygiene, hazard and emissions monitoring. Continuous analyzers, gas chromatographs and portable personal monitors.



Thermocouples, RTDs, Sensors, Thermowell Temperature Transmitters, General Purpose and Specialty Sensors. Assemblies and Specialty Surface Temperature Sensors.



Rotameters - Variable area Flow Meters for use in countless industrial applications power generation, petrochemical, oil and gas, pulp and paper, water and wastewater, mining, agricultural, food and many others.



Instrument Manifold and Valves; Block Valves; Multi-Port Gauge Valves; Pressure Manifolds; Safti-Fold Safety, Severe Safety and Critical Service Valves.



Plastic Body Control Valves for Corrosive Applications; Plastic Isolating and Grounding Flanges; Tube Fittings.



Pressure Reducing & Back-Pressure Regulators; Pilot Operated Regulators; Liquid, Gas, and Steam Services.



BTG's comprehensive portfolio of quality products covers every aspect of pulp and paper production, from consistency control to wet end management, coating and creping.

Valve Repair and Instrument Calibration Services



Sample Before and After Photographs

ECI provides only factory-trained and certified repair technicians

Masonilan Authorized Repair Center

Complete Online and Offline Valve Diagnostic and Predictive Maintenance Services

Foxboro Authorized Service Provider

MSA Factory Authorized Calibration and Field Services Provider



1/4-Turn and Linear Valve Assembly, Sales, and Service

ECI provides our customers with complete On/Off and Control Valve packages.

Butterfly; Ball; Plug; Gate; General or Severe Service Valves

Pneumatic or Electric Actuators;

ASCO; TBV; Marsh Bellofram;

Remote Control; Jordan; Westlock; and Topworx.



After-Hours Emergency Repair Services Hotline: (866) 566-9820

Please note, this number is for service-related emergencies, only. For all other inquiries, please contact our main office.